

Efficient C^2 -Weighting for Image Warping

Supplementary Material

1 Introduction

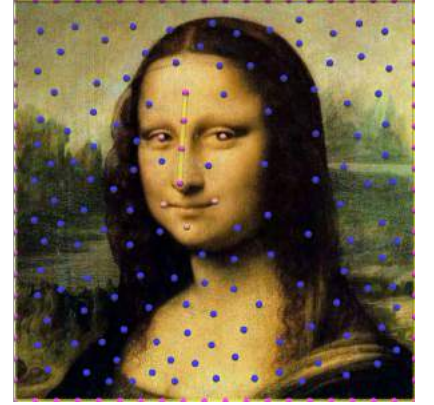
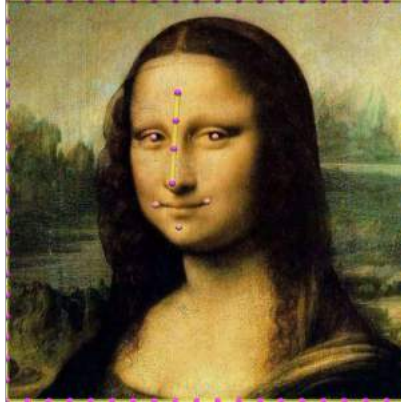
This document complements our paper with more experimental results.

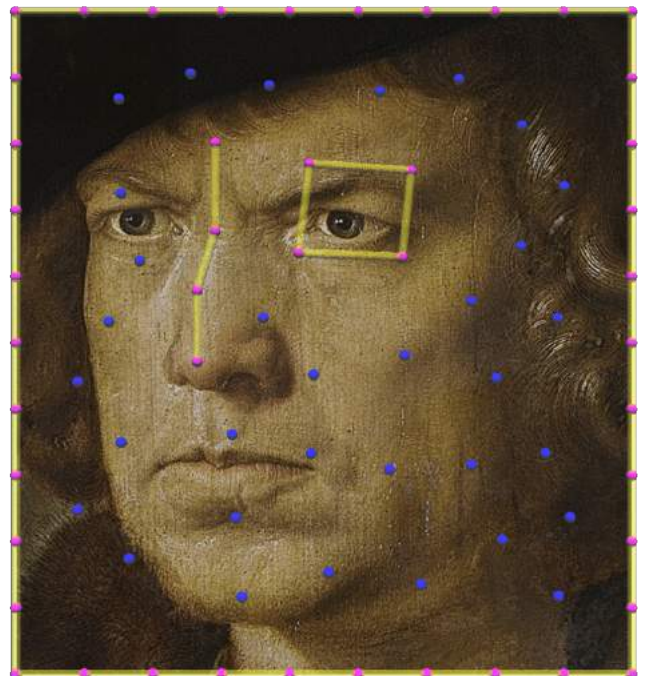
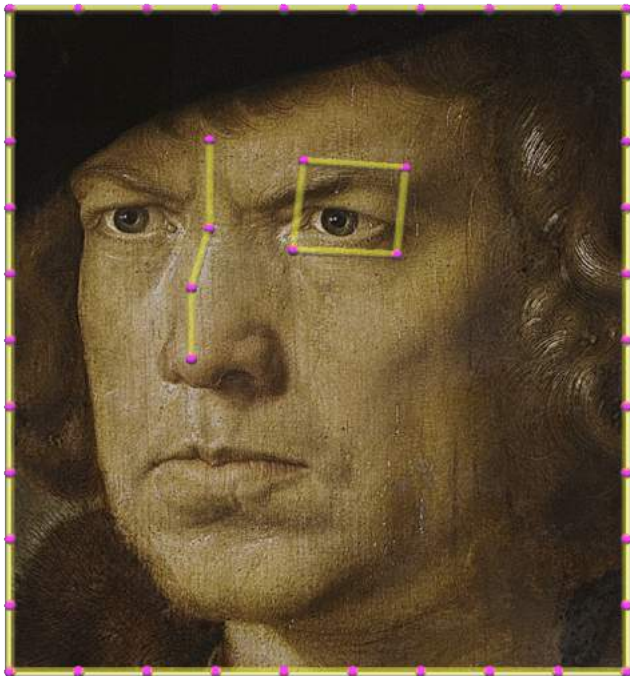
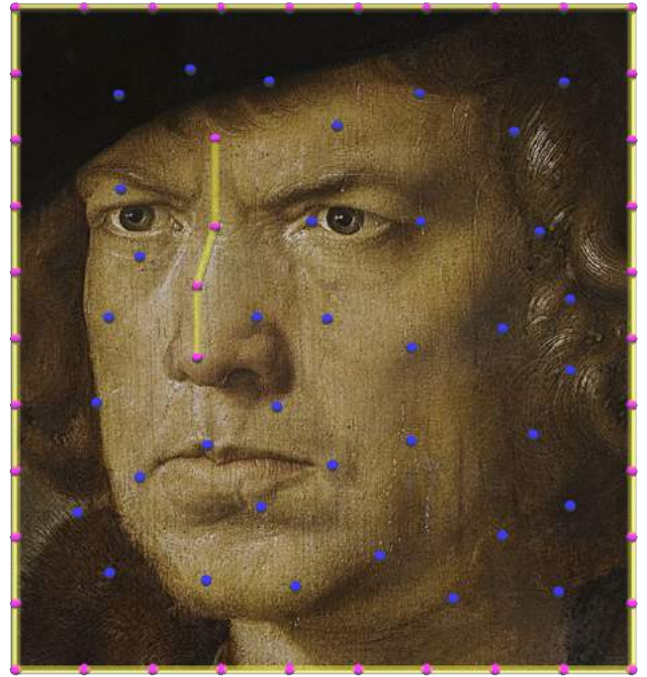
Main Content:

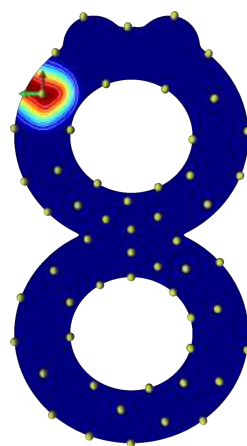
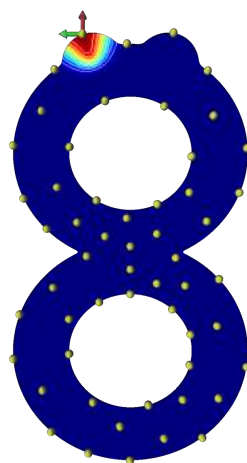
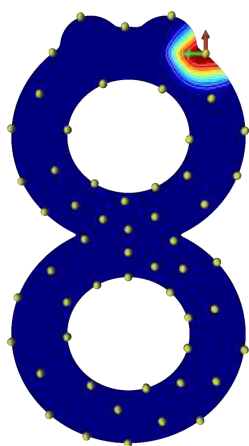
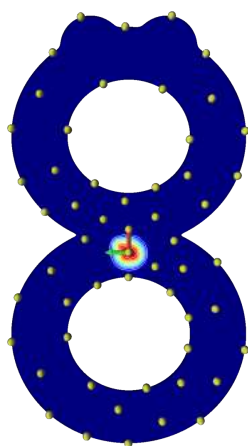
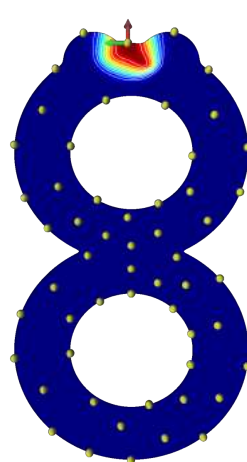
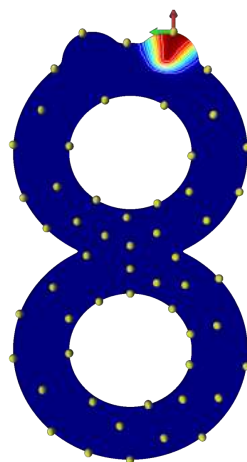
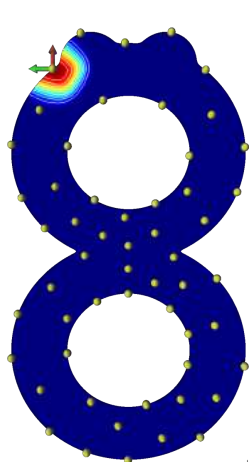
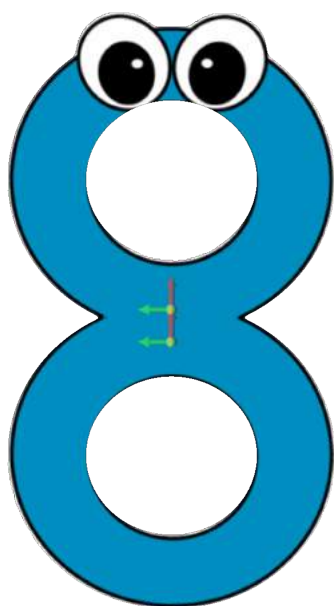
1. Isocurves with different types and placement of handles;
2. Distribution of virtual handles in various cases.

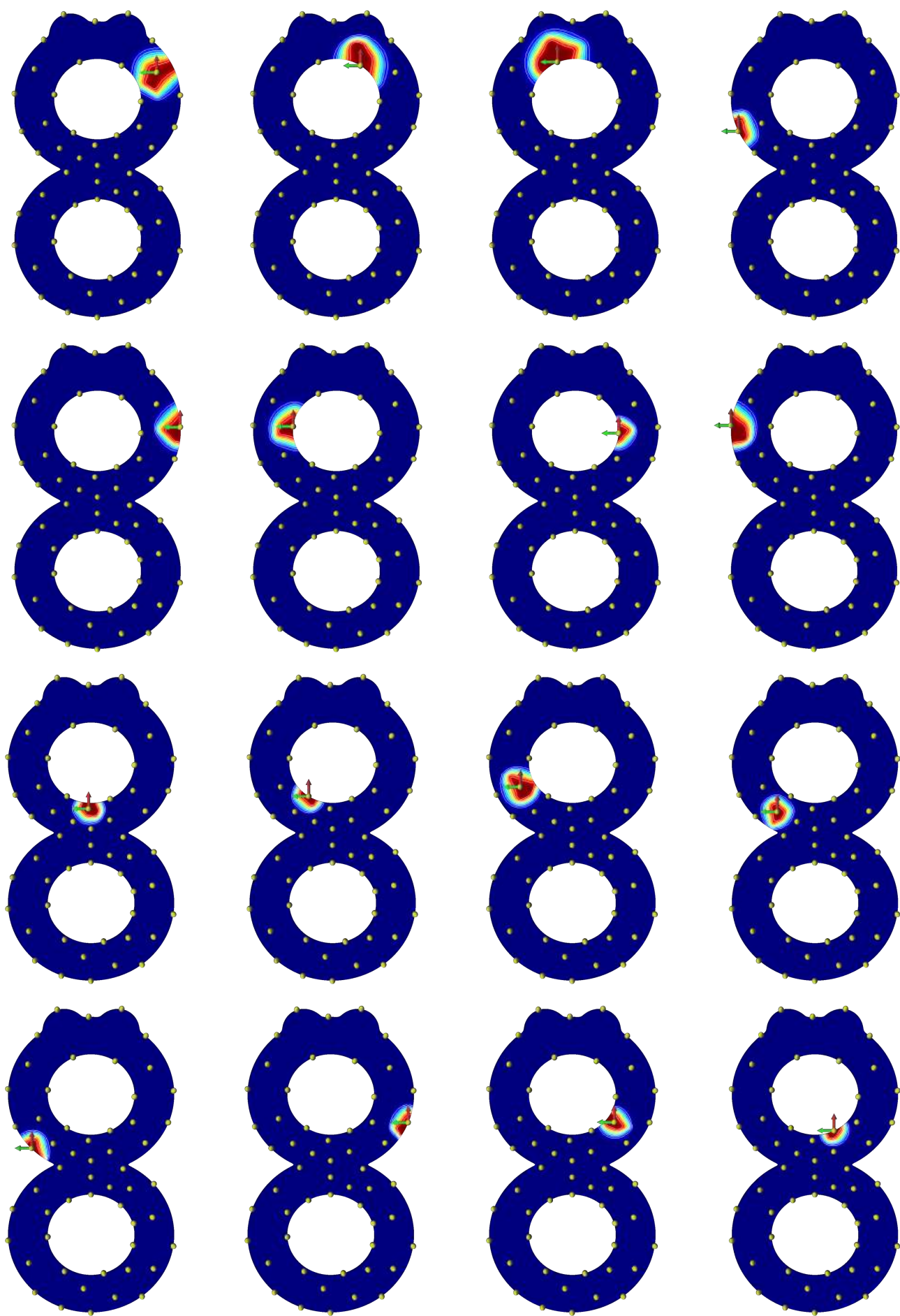
The figures of isocurves show there is no intersection between any isocurves, indicating the *Nonlocal maxima/minima* property. The results of virtual handle distribution demonstrate adaptive insertion of virtual handles according to real handles. The insertion process will converge following the algorithm described in the paper.

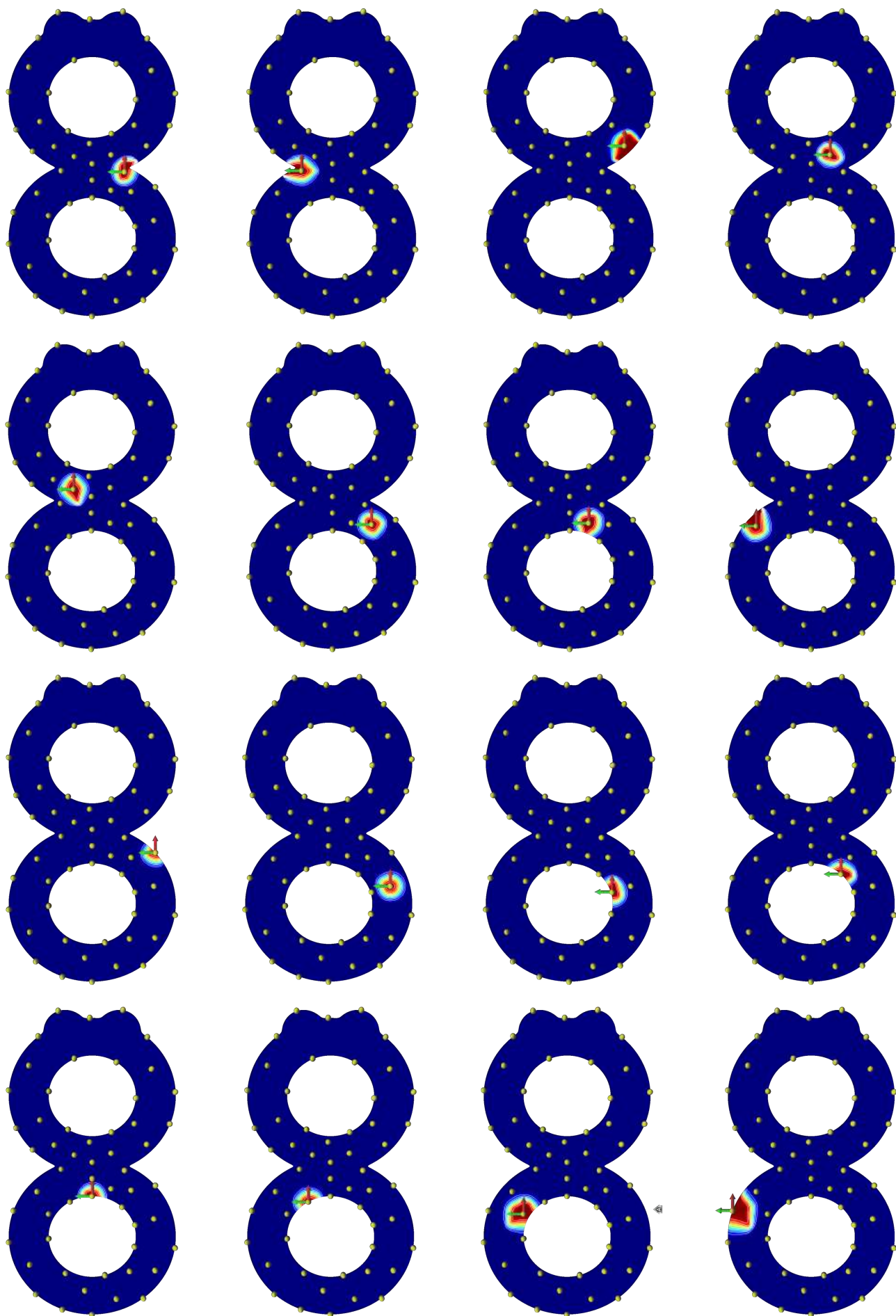
2 Results

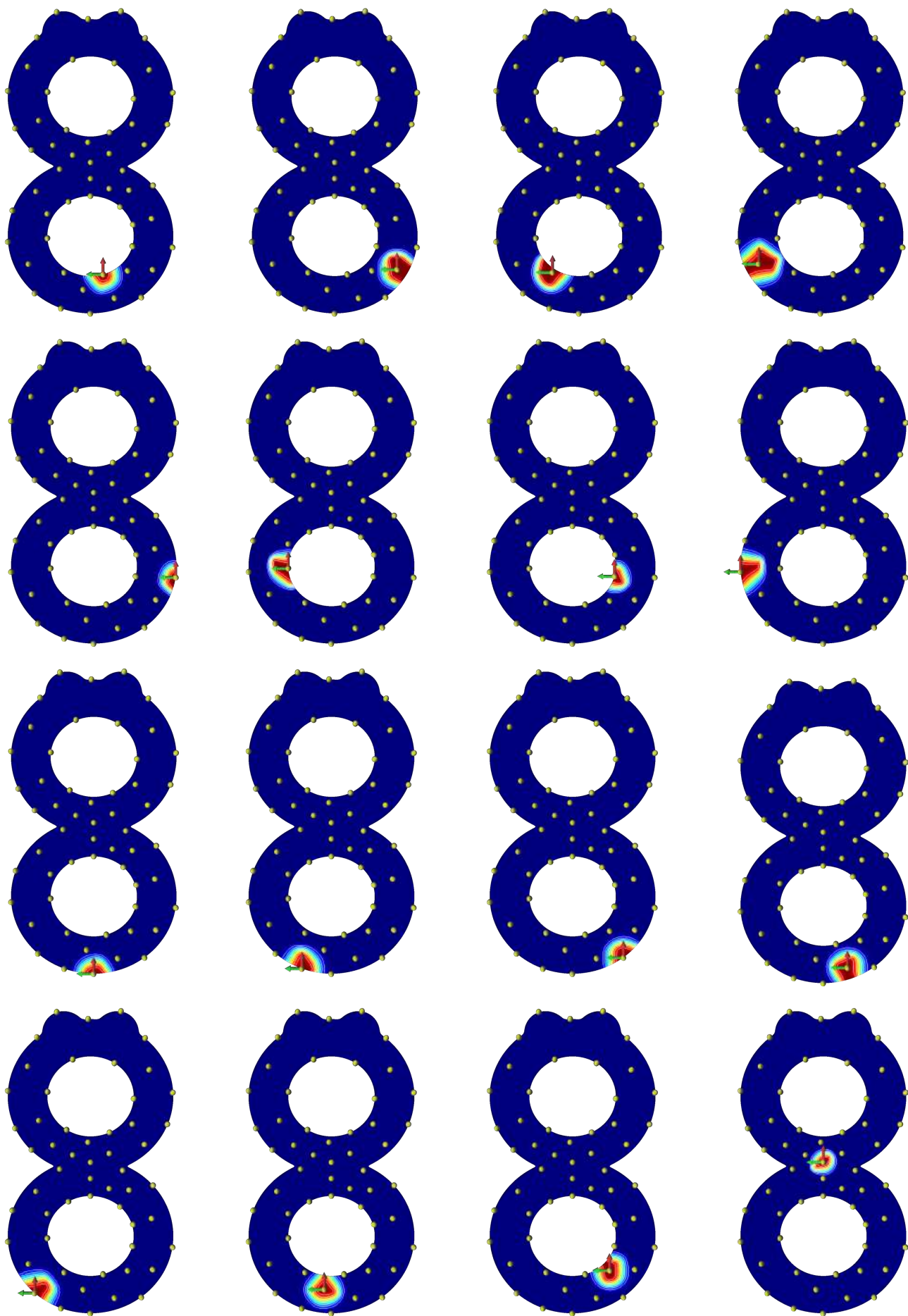


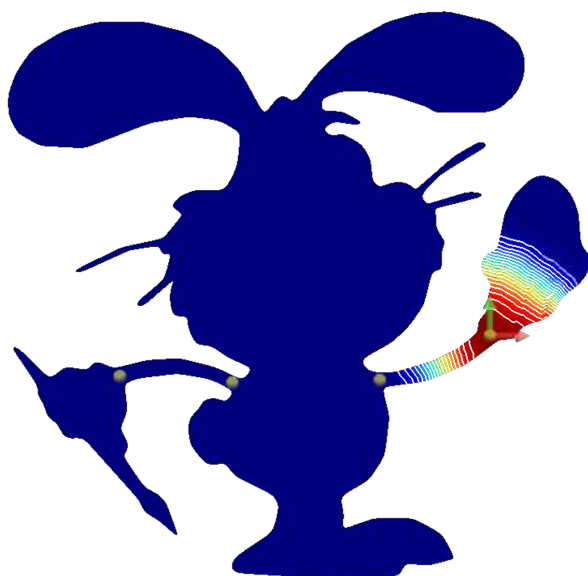
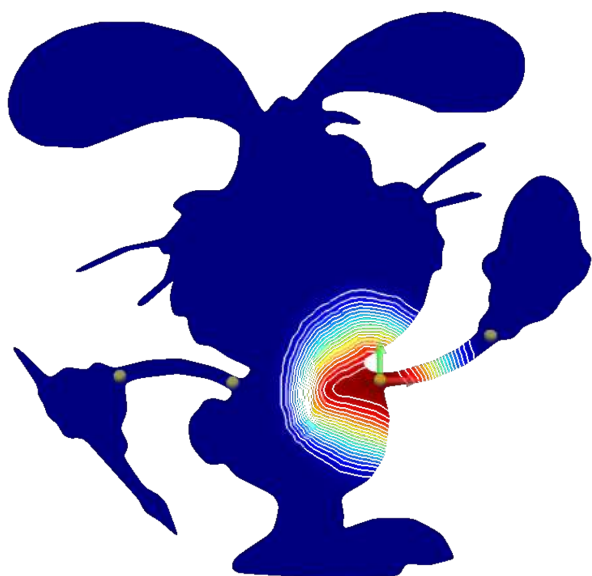
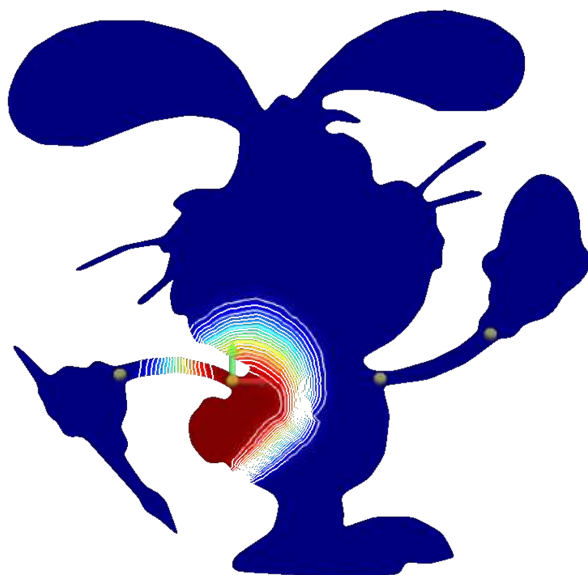
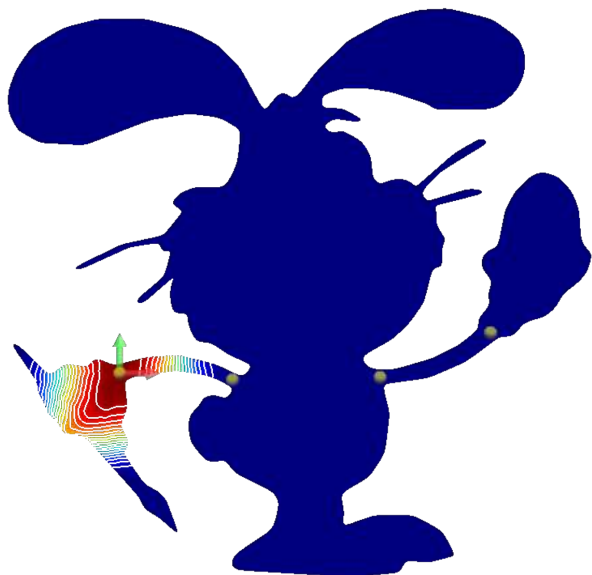
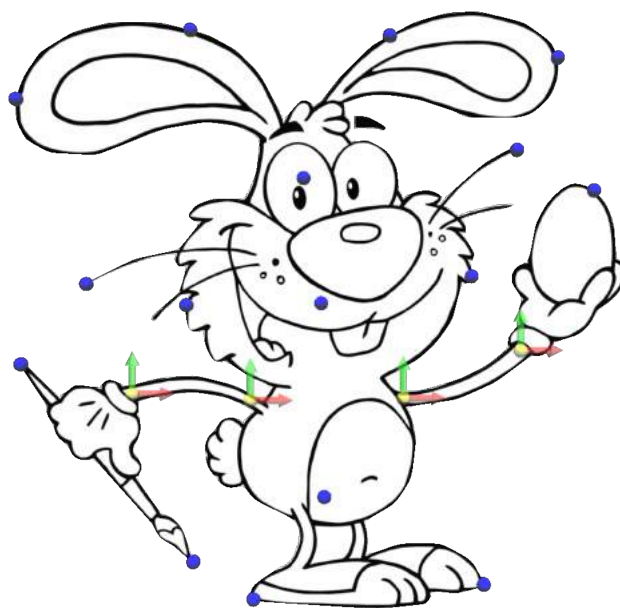
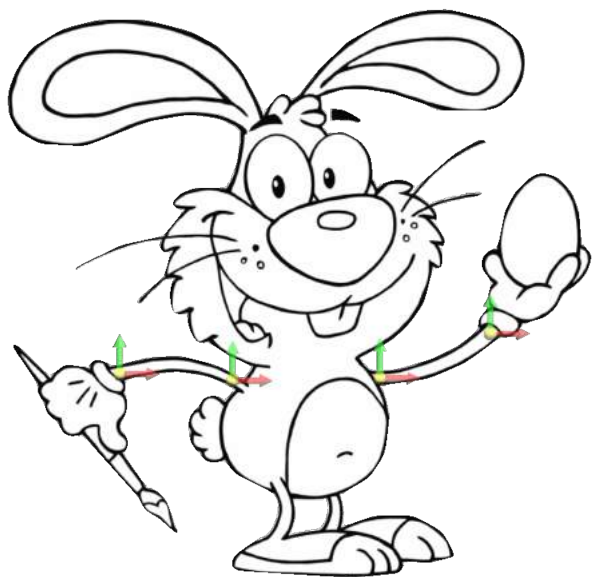


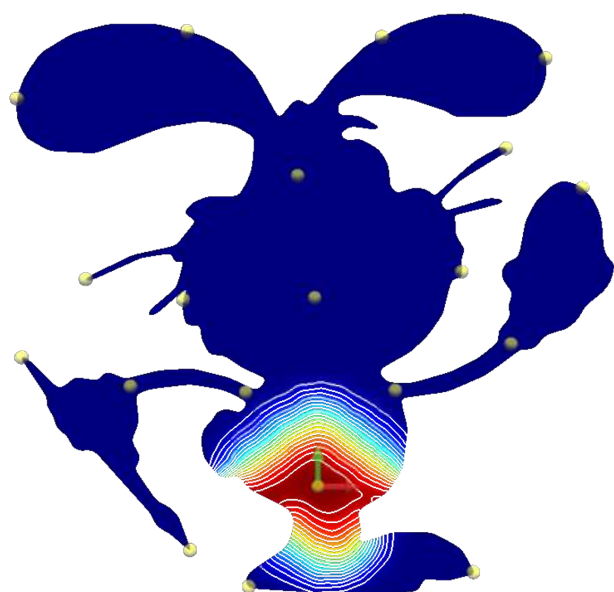
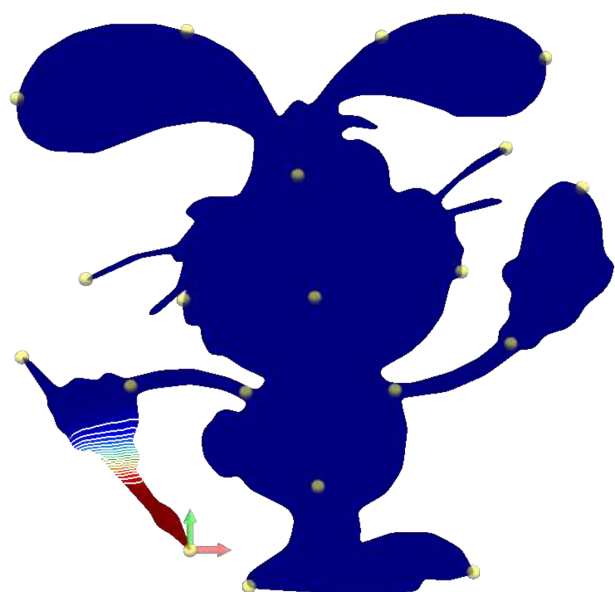
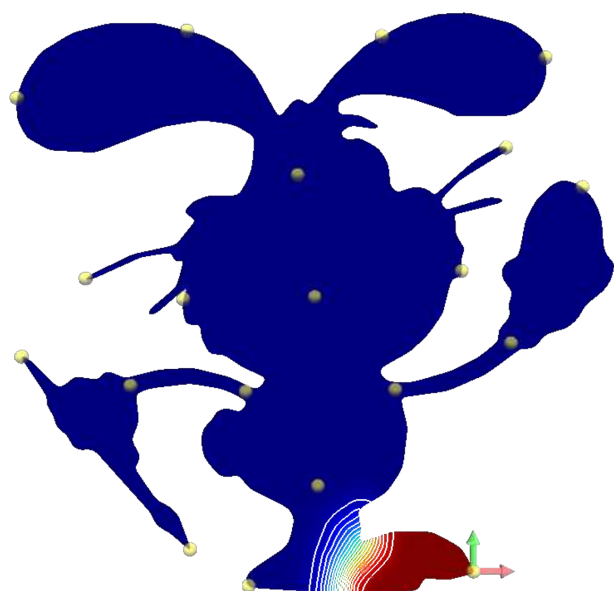
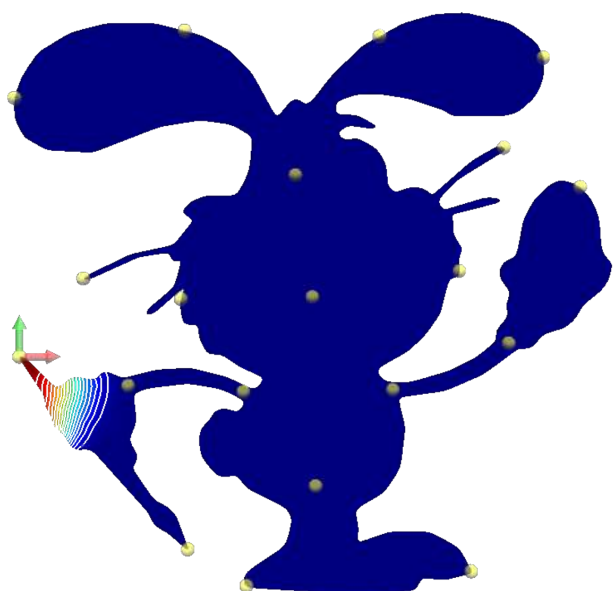
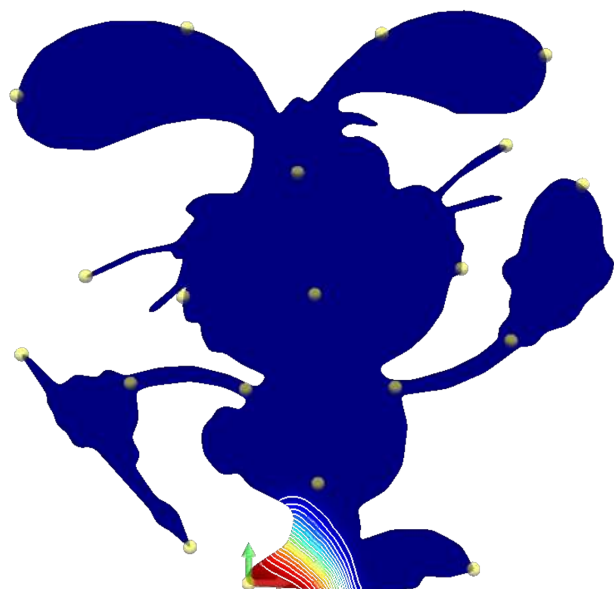
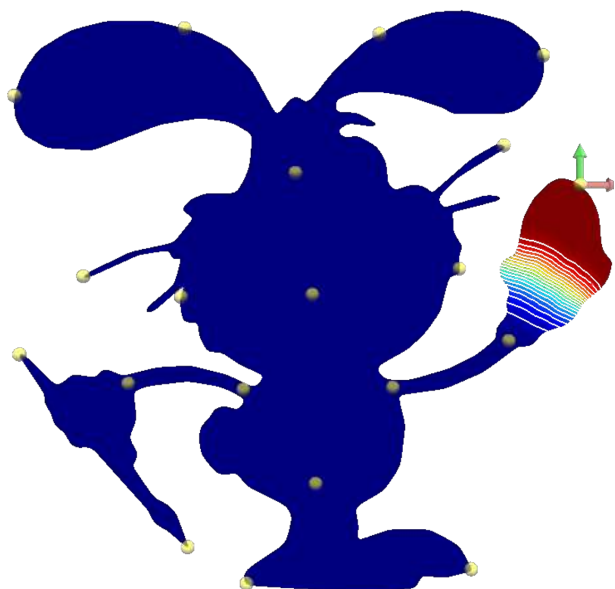


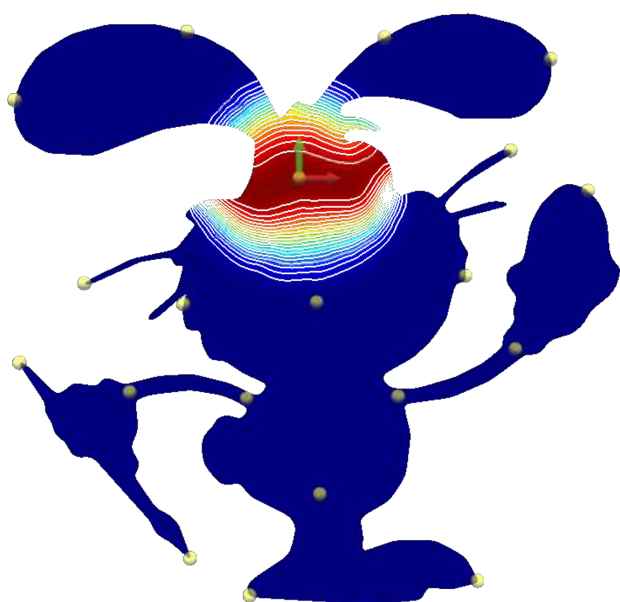
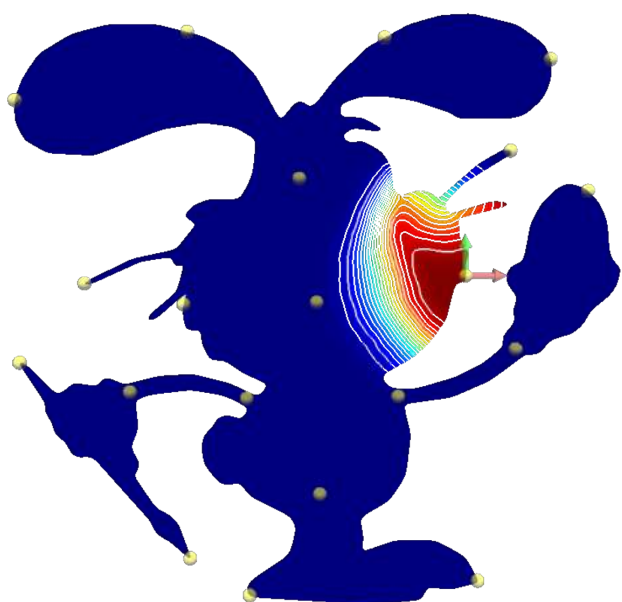
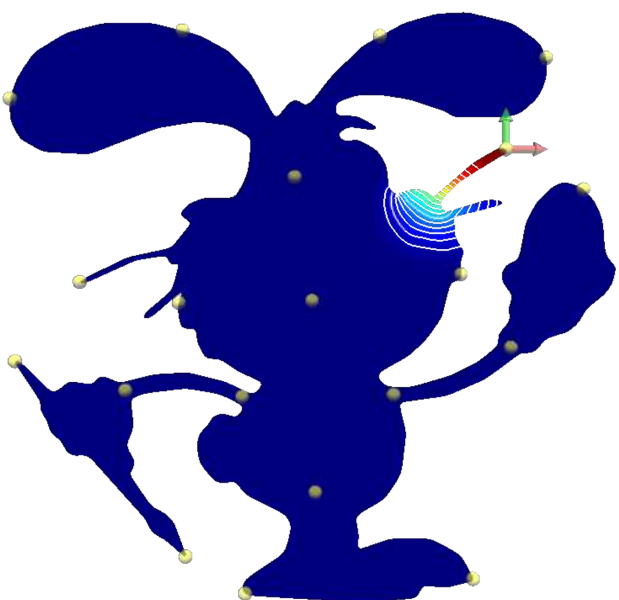
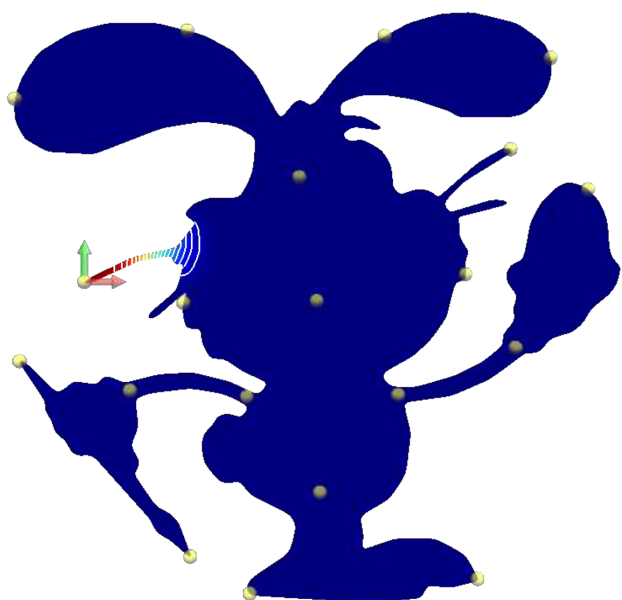
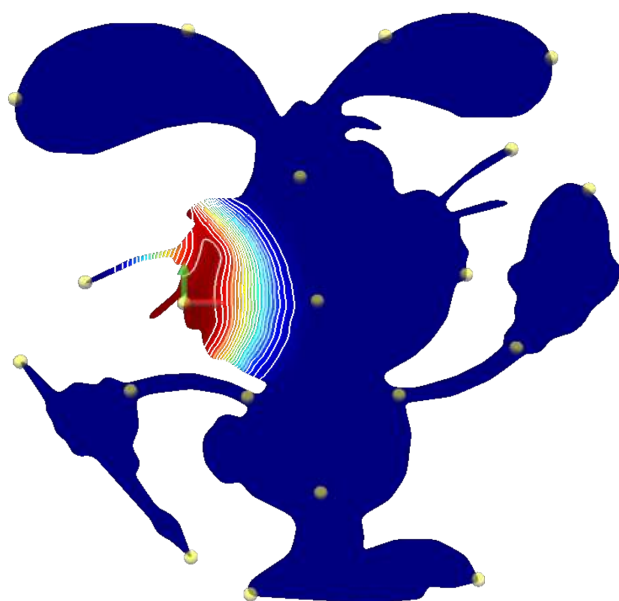
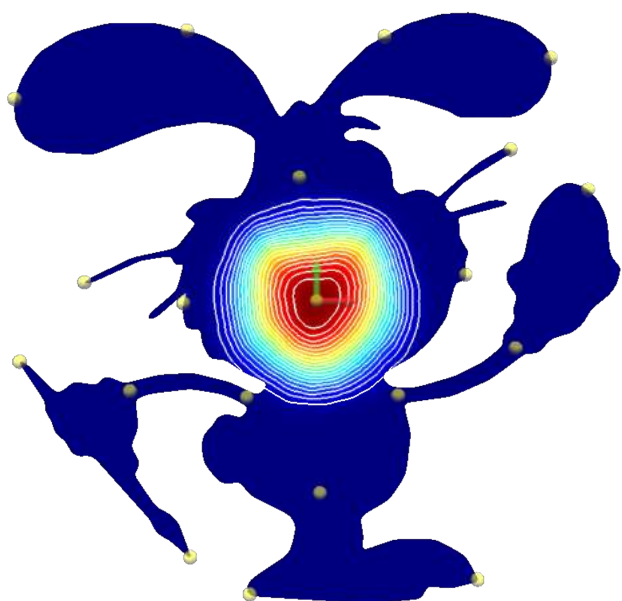


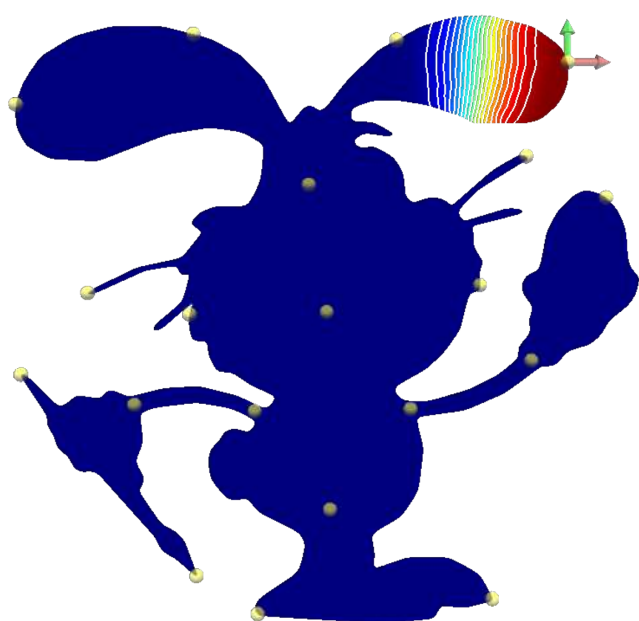
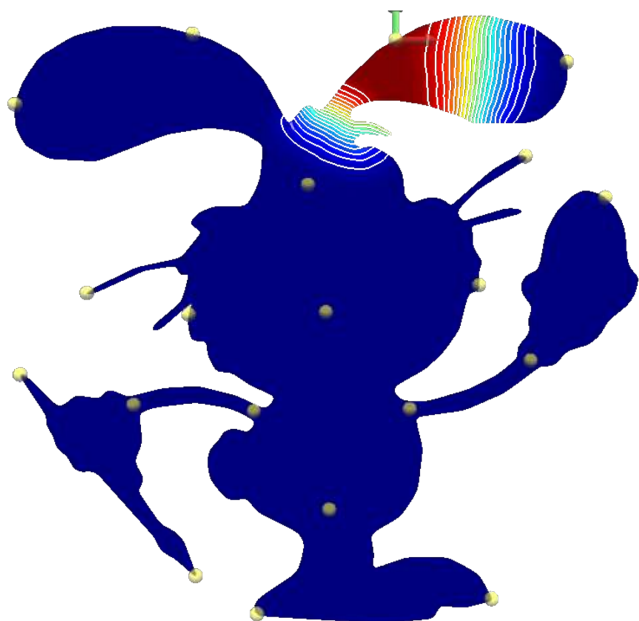
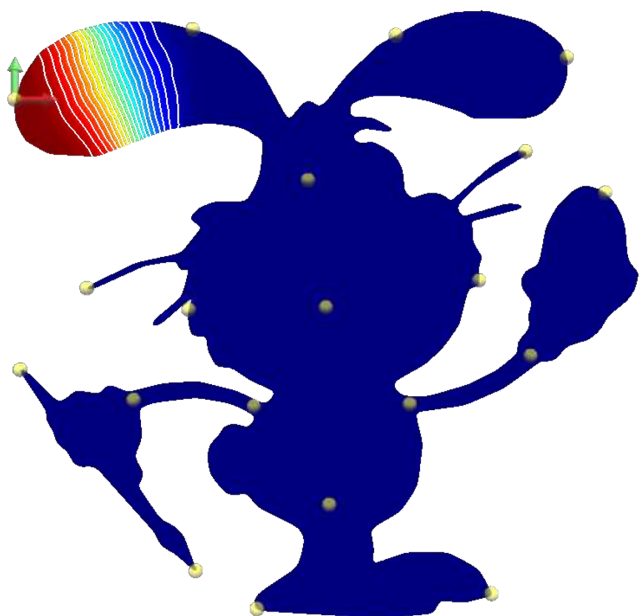


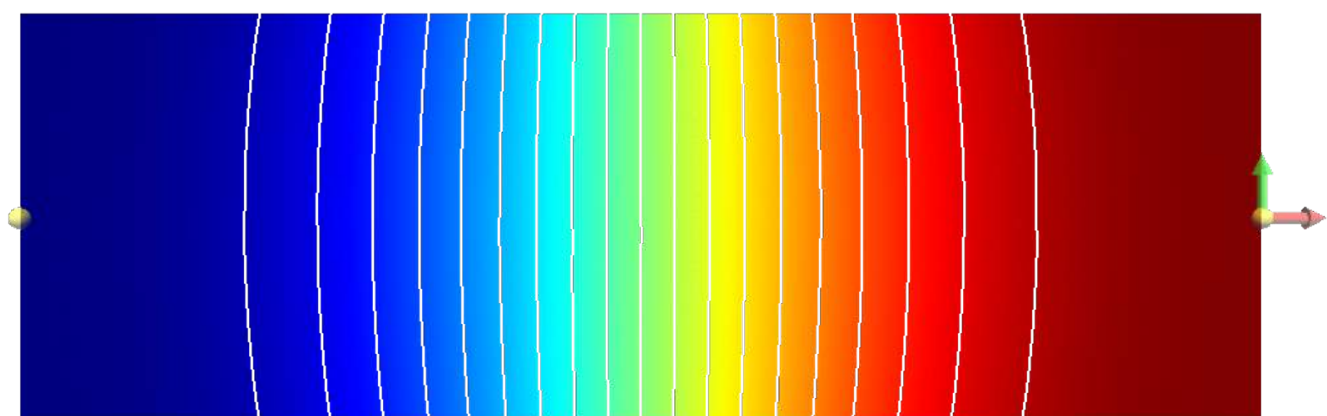
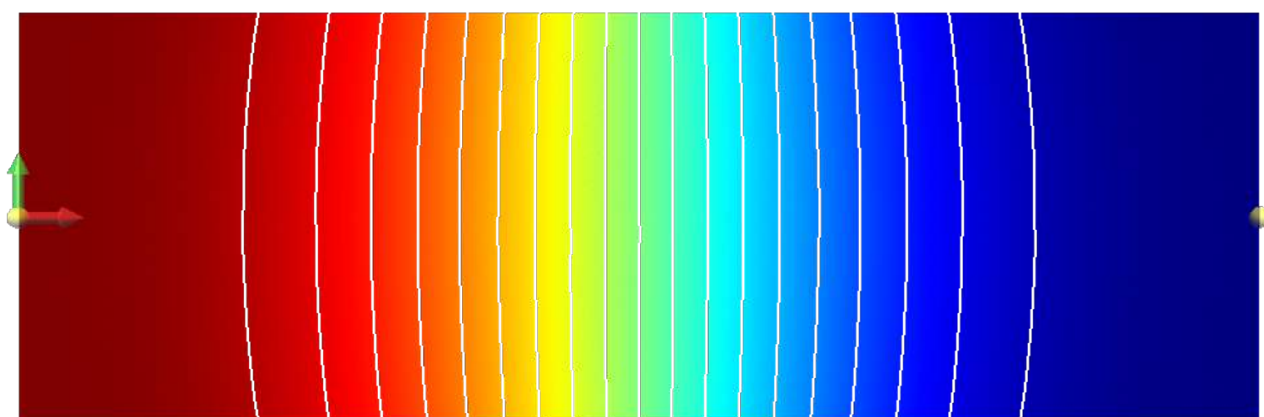
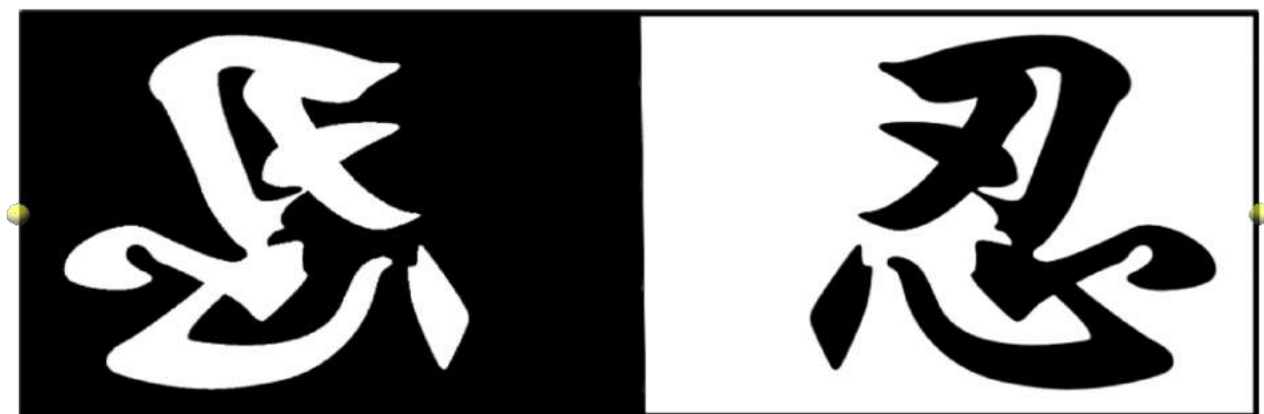




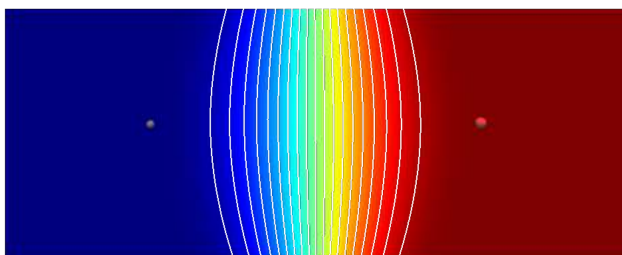
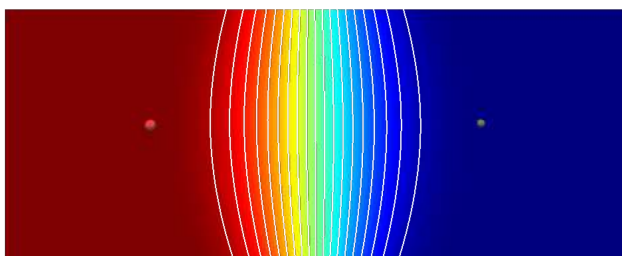








Without fixing boundary



With fixing boundary

